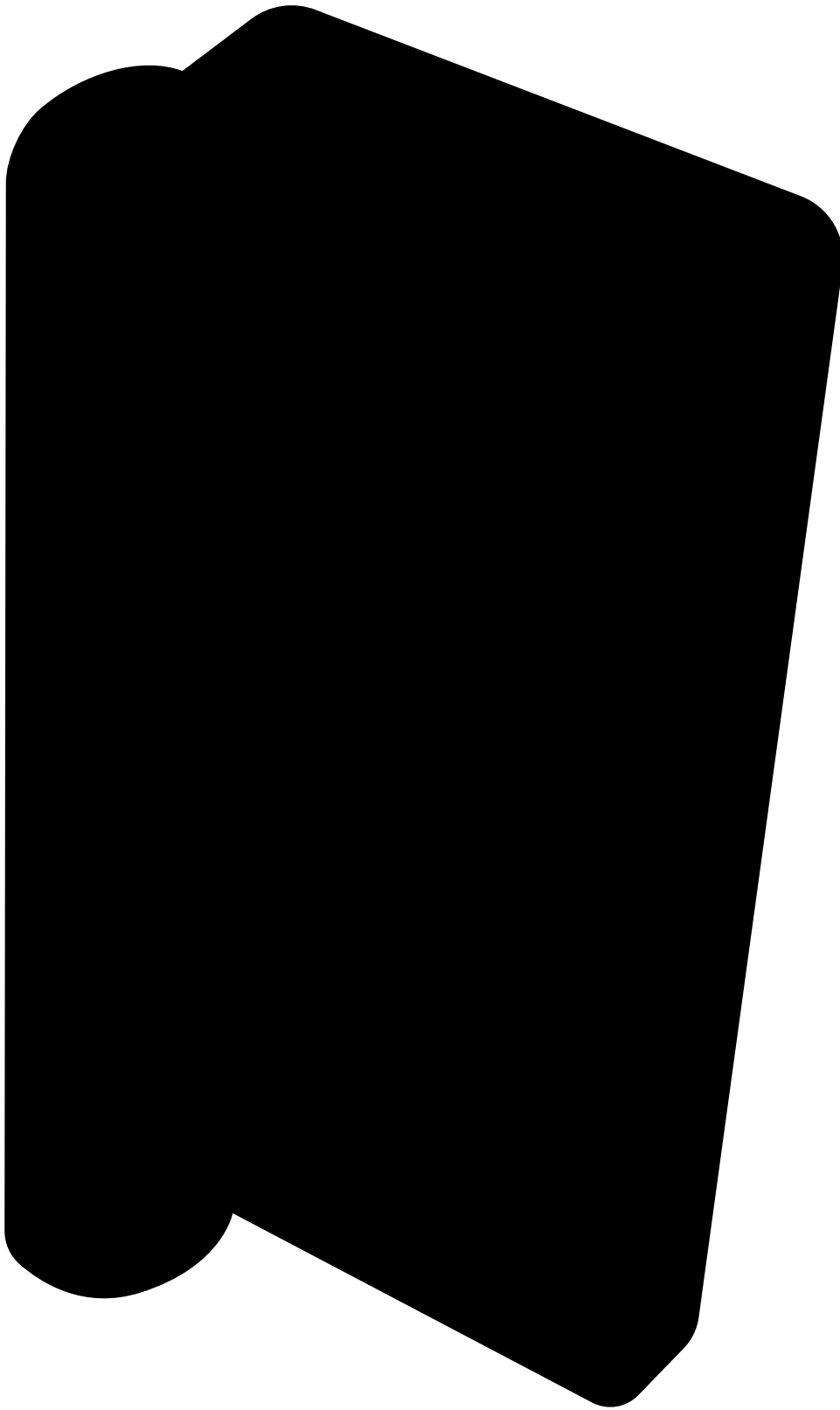


Kumo Sofa



Fact Sheet

Kumo Sofa

Design by Anderssen & Voll

The Kumo Sofa system is built around an innovative metal frame onto which individual cushion components are added. This intelligent design from Anderssen & Voll makes it especially convenient to live with—readily reconfigurable whenever and however you wish. The Kumo Sofa is also efficient and responsible to ship thanks to the same quality: it dismantles easily. Like its namesake—Kumo means “cloud” in Japanese—this sofa is light and soft as well as clever, with generous, foam-filled cushions covered in a luxurious, highly textured woolen fabric as a final flourish.



Product name	Finish	SKU
Kumo Single-seater	Canyon	30183
	Graphite	30078
	Mare	30091
	Porcelain	30072
	Pine	30696
Kumo 2-seater Sofa	Canyon	30411
	Graphite	30409
	Mare	30410
	Porcelain	30408
	Pine	30685
Kumo 3-seater Sofa	Canyon	30415
	Graphite	30413
	Mare	30414
	Porcelain	30412
	Pine	30687
Kumo 4-seater Sofa	Canyon	30419
	Graphite	30417
	Mare	30418
	Porcelain	30416
	Pine	30689

Upholstery

Sera
by Rohi (Germany)
94% Virgin Wool, 6% Polyamide
>122,000 Martindale
Pilling 4-5
Lightfastness 5-8
Flame resistance EN 1021: Part 1 & 2, BS 5852: Part 1 & 2 (Crib 5), US Cal. TB 117

Leg material

Steel
Powder Coated

Inside material

PU foam
Steel structure

Country of origin

Lithuania

Tests & certifications

EN 16139:2013 – L2: Extreme use – Furniture – Strength, durability and safety – Requirements for non-domestic seating

3D model

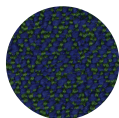
3D files of all products are available on the product pages on hem.com

Always in stock

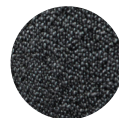
We keep all our products in stock and ready to ship from our warehouses in the US and EU



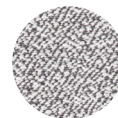
Canyon
Sera (Hem exclusive)



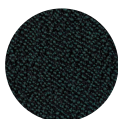
Mare
Sera (Mare)



Graphite
Sera (Graphit)



Porcelain
Sera (Porcelain)



Pine
Sera (Pine)



Black (RAL 9005)
Powder Coated Steel

Samples

We supply samples of all our material finishes, order them directly from hem.com/samples

COM

We offer custom upholsteries and/or stains of this product for larger orders. Reach out to info@hem.com for assistance

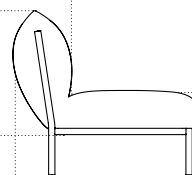
Kumo Sofa

Side view

Seat depth
63 cm / 24.8 in

78 cm / 30.7 in

20 cm / 7.9 in



41 cm / 16.1 in

90 cm / 35.4 in

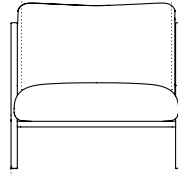
Modularity

This is a modular product that can be configured freely to fit your needs. Reach out to info@hem.com for assistance

Kumo Single-seater

Front view

Seat width
78 cm / 30.7 in

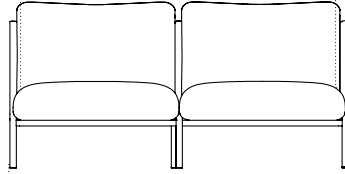


82 cm / 32.3 in

Kumo 2-seater Sofa

Front view

Seat width
156 cm / 61.4 in

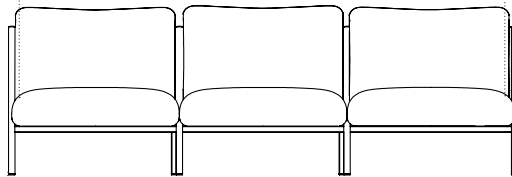


160 cm / 63 in

Kumo 3-seater Sofa

Front view

Seat width
234 cm / 92.1 in

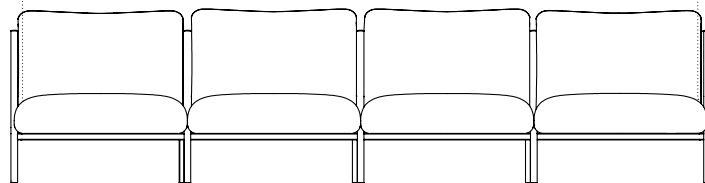


238 cm / 93.7 in

Kumo 4-seater Sofa

Front view

Seat width
312 cm / 122.8 in



316 cm / 124.4 in

Kumo Sofa with Armrests

Design by Anderssen & Voll

The Kumo Sofa system is built around an innovative metal frame onto which individual cushion components are added. This intelligent design from Anderssen & Voll makes it especially convenient to live with—readily reconfigurable whenever and however you wish. The Kumo Sofa is also efficient and responsible to ship thanks to the same quality: it dismantles easily. Like its namesake—Kumo means “cloud” in Japanese—this sofa is light and soft as well as clever, with generous, foam-filled cushions covered in a luxurious, highly textured woolen fabric as a final flourish.



Product name	Finish	SKU
Kumo Single-seater	Canyon	30183
	Graphite	30078
	Mare	30091
	Porcelain	30072
	Pine	30696
Kumo 2-seater Sofa	Canyon	30411
	Graphite	30409
	Mare	30410
	Porcelain	30408
	Pine	30685
Kumo 3-seater Sofa	Canyon	30415
	Graphite	30413
	Mare	30414
	Porcelain	30412
	Pine	30687
Kumo 4-seater Sofa	Canyon	30419
	Graphite	30417
	Mare	30418
	Porcelain	30416
	Pine	30689

Upholstery

Sera
by Rohi (Germany)
94% Virgin Wool, 6% Polyamide
>122,000 Martindale
Pilling 4-5
Lightfastness 5-8
Flame resistance EN 1021: Part 1 & 2, BS 5852: Part 1 & 2 (Crib 5), US Cal. TB 117

Leg material

Steel
Powder Coated

Inside material

PU foam
Steel structure

Country of origin

Lithuania

Tests & certifications

EN 16139:2013 – L2: Extreme use – Furniture – Strength, durability and safety – Requirements for non-domestic seating

3D model

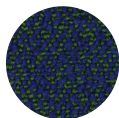
3D files of all products are available on the product pages on hem.com

Always in stock

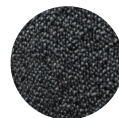
We keep all our products in stock and ready to ship from our warehouses in the US and EU



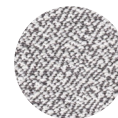
Canyon
Sera (Hem exclusive)



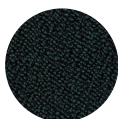
Mare
Sera (Mare)



Graphite
Sera (Graphit)



Porcelain
Sera (Porcelain)



Pine
Sera (Pine)



Black (RAL 9005)
Powder Coated Steel

Samples

We supply samples of all our material finishes, order them directly from hem.com/samples

COM

We offer custom upholsteries and/or stains of this product for larger orders. Reach out to info@hem.com for assistance

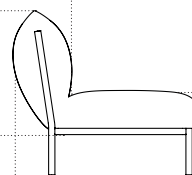
Kumo Sofa

Side view

Seat depth
63 cm / 24.8 in

78 cm / 30.7 in

20 cm / 7.9 in



41 cm / 16.1 in

90 cm / 35.4 in

Kumo Sofa with Armrests

Design by Anderssen & Voll

The Kumo Sofa system is built around an innovative metal frame onto which individual cushion components are added. This intelligent design from Anderssen & Voll makes it especially convenient to live with—readily reconfigurable whenever and however you wish. The Kumo Sofa is also efficient and responsible to ship thanks to the same quality: it dismantles easily. Like its namesake—Kumo means “cloud” in Japanese—this sofa is light and soft as well as clever, with generous, foam-filled cushions covered in a luxurious, highly textured woolen fabric as a final flourish.



Product name	Finish	Finish	SKU
Kumo Single-seater Sofa with Armrests	Canyon		30437
	Graphite		30436
	Mare		30435
	Porcelain		30434
	Pine		30697
Kumo 2-seater Sofa with Armrests	Canyon		30170
	Graphite		30079
	Mare		30092
	Porcelain		30073
	Pine		30686
Kumo 3-seater Sofa with Armrests	Canyon		30184
	Graphite		30080
	Mare		30093
	Porcelain		30074
	Pine		30688
Kumo 4-seater Sofa with Armrests	Canyon		30185
	Graphite		30100
	Mare		30101
	Porcelain		30099
	Pine		30690

Upholstery

Sera
by Rohi (Germany)
94% Virgin Wool, 6% Polyamide
>122,000 Martindale
Pilling 4-5
Lightfastness 5-8
Flame resistance EN 1021: Part 1 & 2, BS 5852: Part 1 & 2 (Crib 5), US Cal. TB 117

Leg material

Steel
Powder Coated

Inside material

PU foam
Steel structure

Country of origin

Lithuania

Tests & certifications

EN 16139:2013 – L2: Extreme use – Furniture – Strength, durability and safety – Requirements for non-domestic seating

3D model

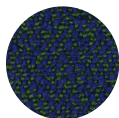
3D files of all products are available on the product pages on hem.com

Always in stock

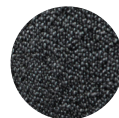
We keep all our products in stock and ready to ship from our warehouses in the US and EU



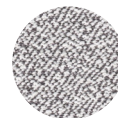
Canyon
Sera (Hem exclusive)



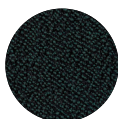
Mare
Sera (Mare)



Graphite
Sera (Graphit)



Porcelain
Sera (Porcelain)



Pine
Sera (Pine)



Black (RAL 9005)
Powder Coated Steel

Samples

We supply samples of all our material finishes, order them directly from hem.com/samples

COM

We offer custom upholsteries and/or stains of this product for larger orders. Reach out to info@hem.com for assistance

Kumo Sofa with Armrests

Side view

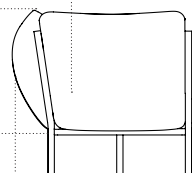
Seat depth
63 cm / 24.8 in

78 cm / 30.7 in

20 cm / 7.9 in

90 cm / 35.4 in

41 cm / 16.2 in

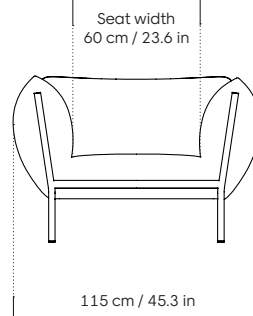


Modularity

This is a modular product that can be configured freely to fit your needs. Reach out to info@hem.com for assistance

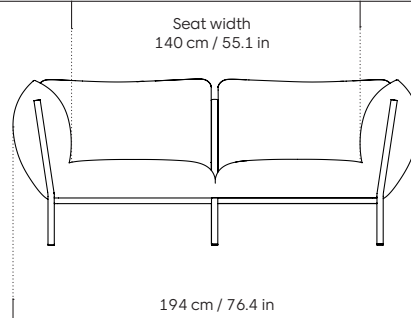
Kumo Single-seater with Armrests

Front view



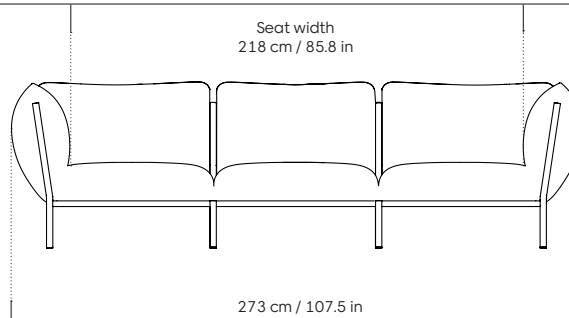
Kumo 2-seater Sofa with Armrests

Front view



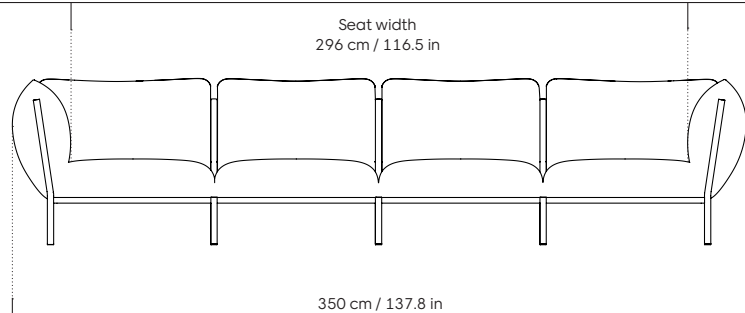
Kumo 3-seater Sofa with Armrests

Front view



Kumo 4-seater Sofa with Armrests

Front view



Kumo Corner Sofa Left with Armrest

Kumo Corner Sofa Right with Armrest

Design by Anderssen & Voll

The Kumo Sofa system is built around an innovative metal frame onto which individual cushion components are added. This intelligent design from Anderssen & Voll makes it especially convenient to live with—readily reconfigurable whenever and however you wish. The Kumo Sofa is also efficient and responsible to ship thanks to the same quality: it dismantles easily. Like its namesake—Kumo means “cloud” in Japanese—this sofa is light and soft as well as clever, with generous, foam-filled cushions covered in a luxurious, highly textured woolen fabric as a final flourish.



Product name	Finish	Finish	SKU
Kumo Corner Sofa Left with Armrest	Canyon		30441
	Graphite		30440
	Mare		30439
	Porcelain		30438
	Pine		30692
Kumo Corner Sofa Right with Armrest	Canyon		30445
	Graphite		30444
	Mare		30443
	Porcelain		30442
	Pine		30694

Upholstery

Sera
by Rohi (Germany)
94% Virgin Wool, 6% Polyamide
>122,000 Martindale
Pilling 4-5
Lightfastness 5-8
Flame resistance EN 1021: Part 1 & 2, BS 5852: Part 1 & 2 (Crib 5), US Cal. TB 117

Leg material

Steel
Powder Coated

Inside material

PU foam
Steel structure

Country of origin

Lithuania

Tests & certifications

EN 16139:2013 – L2: Extreme use – Furniture –
Strength, durability and safety – Requirements
for non-domestic seating

3D model

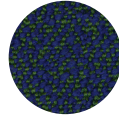
3D files of all products are available on the product pages on hem.com

Always in stock

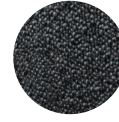
We keep all our products in stock and ready to ship from our warehouses in the US and EU



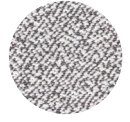
Canyon
Sera (Hem exclusive)



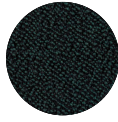
Mare
Sera (Mare)



Graphite
Sera (Graphit)



Porcelain
Sera (Porcelain)



Pine
Sera (Pine)



Black (RAL 9005)
Powder Coated Steel

Samples

We supply samples of all our material finishes, order them directly from hem.com/samples

COM

We offer custom upholsteries and/or stains of this product for larger orders. Reach out to info@hem.com for assistance

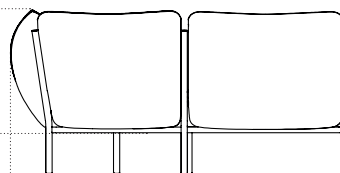
Kumo Corner Sofa Left with Armrest

Side view

78 cm / 30.7 in

20 cm / 7.9 in

164 cm / 64.6 in

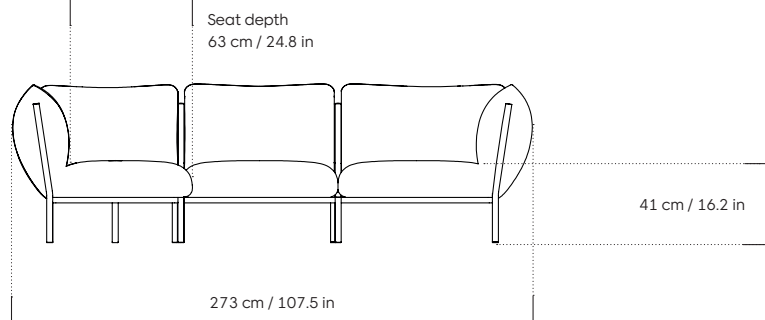


Modularity

This is a modular product that can be configured freely to fit your needs. Reach out to info@hem.com for assistance

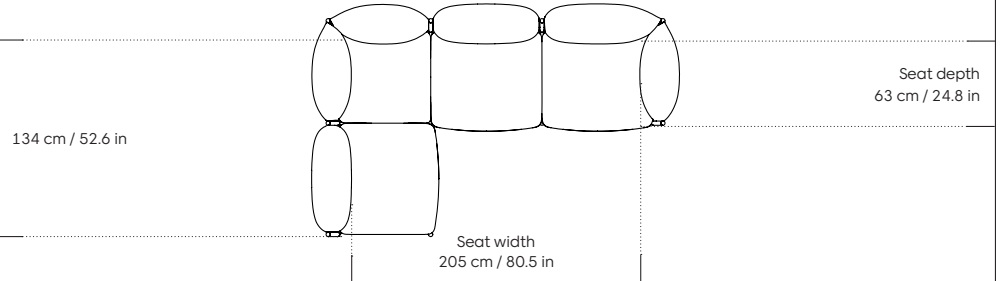
Kumo Corner Sofa Left with Armrest

Front view



Kumo Corner Sofa Left with Armrest

Top view



Kumo Corner Sofa Left

Kumo Corner Sofa Right

Design by Anderssen & Voll

The Kumo Sofa system is built around an innovative metal frame onto which individual cushion components are added. This intelligent design from Anderssen & Voll makes it especially convenient to live with—readily reconfigurable whenever and however you wish. The Kumo Sofa is also efficient and responsible to ship thanks to the same quality: it dismantles easily. Like its namesake—Kumo means “cloud” in Japanese—this sofa is light and soft as well as clever, with generous, foam-filled cushions covered in a luxurious, highly textured woolen fabric as a final flourish.



Product name	Finish	Finish	SKU
Kumo Corner Sofa Left	Canyon		30449
	Graphite		30448
	Mare		30447
	Porcelain		30446
	Pine		30691
Kumo Corner Sofa Right	Canyon		30453
	Graphite		30452
	Mare		30451
	Porcelain		30450
	Pine		30693

Upholstery

Sera
by Rohi (Germany)
94% Virgin Wool, 6% Polyamide
>122,000 Martindale
Pilling 4-5
Lightfastness 5-8
Flame resistance EN 1021: Part 1 & 2, BS 5852: Part 1 & 2 (Crib 5), US Cal. TB 117

Leg material

Steel
Powder Coated

Inside material

PU foam
Steel structure

Country of origin

Lithuania

Tests & certifications

EN 16139:2013 – L2: Extreme use – Furniture – Strength, durability and safety – Requirements for non-domestic seating

3D model

3D files of all products are available on the product pages on hem.com

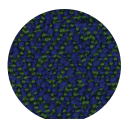
Always in stock

We keep all our products in stock and ready to ship from our warehouses in the US and EU



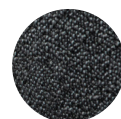
Canyon

Sera (Hem exclusive)



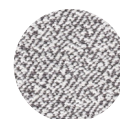
Mare

Sera (Mare)



Graphite

Sera (Graphit)



Porcelain

Sera (Porcelain)



Pine

Sera (Pine)



Black (RAL 9005)

Powder Coated Steel

Samples

We supply samples of all our material finishes, order them directly from hem.com/samples

COM

We offer custom upholsteries and/or stains of this product for larger orders. Reach out to info@hem.com for assistance

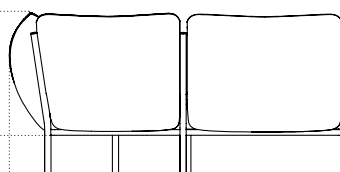
Kumo Corner Sofa Left

Side view

78 cm / 30.7 in

20 cm / 7.9 in

164 cm / 64.6 in

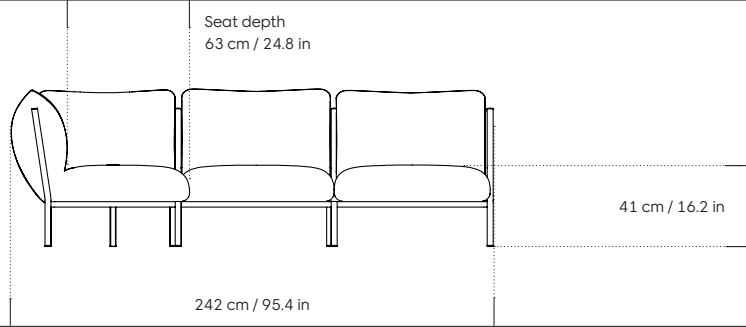


Modularity

This is a modular product that can be configured freely to fit your needs. Reach out to info@hem.com for assistance

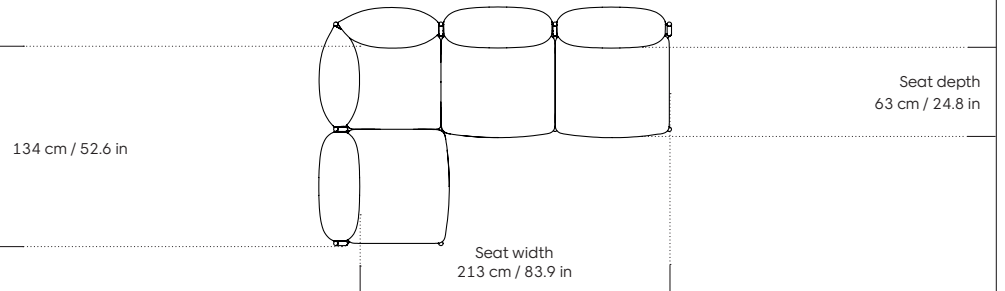
Kumo Corner Sofa Left

Front view



Kumo Corner Sofa Left

Top view


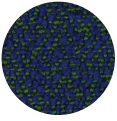
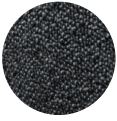
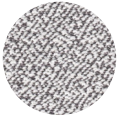
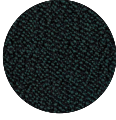

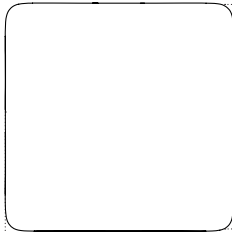
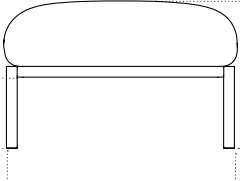


Kumo Ottoman

Design by Anderssen & Voll

The Kumo Sofa system is built around an innovative metal frame onto which individual cushion components are added. This intelligent design from Anderssen & Voll makes it especially convenient to live with—readily reconfigurable whenever and however you wish. The Kumo Sofa is also efficient and responsible to ship thanks to the same quality: it dismantles easily. Like its namesake—Kumo means “cloud” in Japanese—this sofa is light and soft as well as clever, with generous, foam-filled cushions covered in a luxurious, highly textured woolen fabric as a final flourish.



Product name	Finish	SKU
Kumo Ottoman	Canyon	30089
	Graphite	30083
	Mare	30096
	Porcelain	30077
	Pine	30695
<p>Upholstery Sera by Rohi (Germany) 94% Virgin Wool, 6% Polyamide >122,000 Martindale Pilling 4-5 Lightfastness 5-8 Flame resistance EN 1021: Part 1 & 2, BS 5852: Part 1 & 2 (Crib 5), US Cal. TB 117</p> <p>Leg material Steel Powder Coated</p> <p>Inside material PU foam Steel structure</p> <p>Country of origin Lithuania</p> <p>Tests & certifications EN 16139:2013 – L2: Extreme use – Furniture – Strength, durability and safety – Requirements for non-domestic seating</p> <p>3D model 3D files of all products are available on the product pages on hem.com</p> <p>Modularity This is a modular product that can be configured freely to fit your needs. Reach out to info@hem.com for assistance</p>		
<p>Always in stock We keep all our products in stock and ready to ship from our warehouses in the US and EU</p> <div style="display: flex; justify-content: space-around; align-items: flex-start;"> <div style="text-align: center;">  <p>Canyon Sera (Hem exclusive)</p> </div> <div style="text-align: center;">  <p>Mare Sera (Mare)</p> </div> <div style="text-align: center;">  <p>Graphite Sera (Graphit)</p> </div> <div style="text-align: center;">  <p>Porcelain Sera (Porcelain)</p> </div> </div> <div style="display: flex; justify-content: space-around; align-items: flex-start; margin-top: 20px;"> <div style="text-align: center;">  <p>Pine Sera (Pine)</p> </div> <div style="text-align: center;">  <p>Black (RAL 9005) Powder Coated Steel</p> </div> </div>		
		<p>Samples We supply samples of all our material finishes, order them directly from hem.com/samples</p>
		<p>COM We offer custom upholsteries and/or stains of this product for larger orders. Reach out to info@hem.com for assistance</p>
Kumo Ottoman		
Top view	 <p>65 cm / 25.6 in</p>	<p>Front view</p>  <p>41.0 cm / 16.1 in</p> <p>63 cm / 25 in</p>

With proper care, the high quality of Hem furniture can be maintained for years to come. If you want to learn more or have any questions about our care & maintenance recommendations, please write to info@hem.com.

Hem